



ARGYLE STREET STREETSCAPE - S-1-323 PUBLIC MEETING

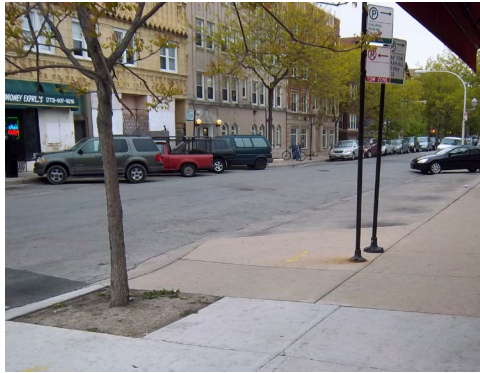
July 29, 2013



site design group, ltd.
urban design | landscape architecture | architecture



CATALYST
COMMUNICATIONS



Broadway - Winthrop:
13 existing parking spots



Winthrop - Kenmore:
25 existing parking spots



Kenmore - Sheridan:
20 existing parking spots



EXISTING CONDITIONS

July 29, 2013

ARGYLE STREETSCAPE
Public Meeting



site design group, ltd.
urban design | landscape architecture | architecture

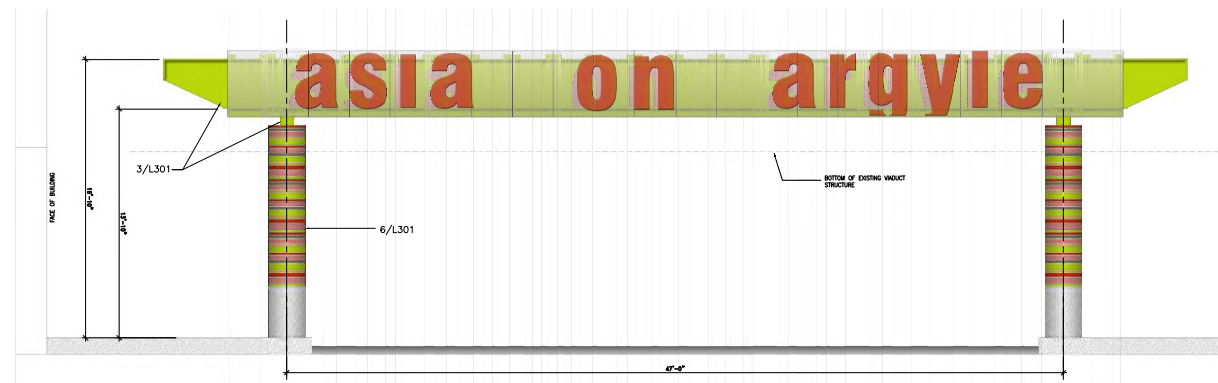




PROJECT GOALS

- 1 Improve infrastructure by creating a cohesive and flexible streetscape plan within funding limitations
- 2 Support existing Argyle St. merchants and their customers and bolster Argyle St. as a regional business destination
- 3 Brand Argyle St. business district and develop community identification
- 4 Provide a complete and shared street that benefits the flow of pedestrian, vehicular and bike traffic equally
- 5 Implement streetscape and infrastructure elements that increase public safety and deter negative activity

GOALS



July 29, 2013

ARGYLE STREETSCAPE
Public Meeting

WHAT IS A SHARED STREET

"Shared Space is more a way of thinking than it is a design concept. It is most readily recognized as a street space where all traffic control devices such as signals and stop signs, all markings such as crosswalks, and all signing have been removed. Curbing is removed to blur the lines between sidewalks and motorized travel way. The philosophy is that absence of all of those features forces all users of the space — from pedestrians to drivers — to negotiate passage through the space via eye contact and person to person negotiation."

- Gary Toth, Aug. 17, 2009 <http://www.pps.org/blog/shared-space>

DESIGN ELEMENTS

Speeds less than 15 mph

Blurred lines between pedestrian and vehicular spaces

Removal of barrier curbs

BENEFITS

Kensington High Street in London showed a 43% decrease in casualties/injuries over a two year period after converted to a Shared Street

Increased safety through individual responsibility

Expansion of Public Urban Space

Increased pedestrian and bicycle traffic

Drivers are fourteen times more likely to give-way to pedestrians

Promotes economic development

Flexible for street fairs, markets, parades

Promotes safe and comfortable outdoor cafe space



SHARED STREET

July 29, 2013

ARGYLE STREETSCAPE
Public Meeting

CDOT
CHICAGO DEPARTMENT
OF TRANSPORTATION

**Burns &
McDonnell**
SINCE 1898

site design group, ltd.
urban design | landscape architecture | architecture

CATALYST
COMMUNICATIONS



SHARED STREET CASE STUDIES: New Road - Brighton, England

July 29, 2013

ARGYLE STREETSCAPE
Public Meeting



site design group, ltd.
urban design | landscape architecture | architecture





SHARED STREET CASE STUDIES: Allen Street - Buffalo, New York

July 29, 2013

ARGYLE STREETSCAPE
Public Meeting



site design group, ltd.
urban design | landscape architecture | architecture





SHARED STREET CASE STUDIES: King Street - Kitchener, Ontario

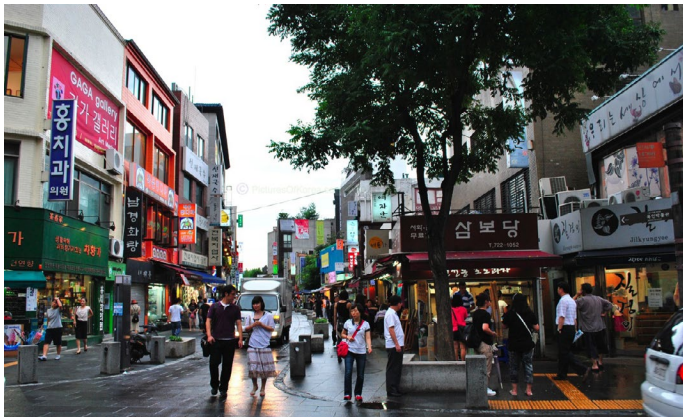
July 29, 2013

ARGYLE STREETSCAPE
Public Meeting



site design group, ltd.
urban design | landscape architecture | architecture





SHARED STREET CASE STUDIES: Insadong Street - Seoul, Korea

July 29, 2013

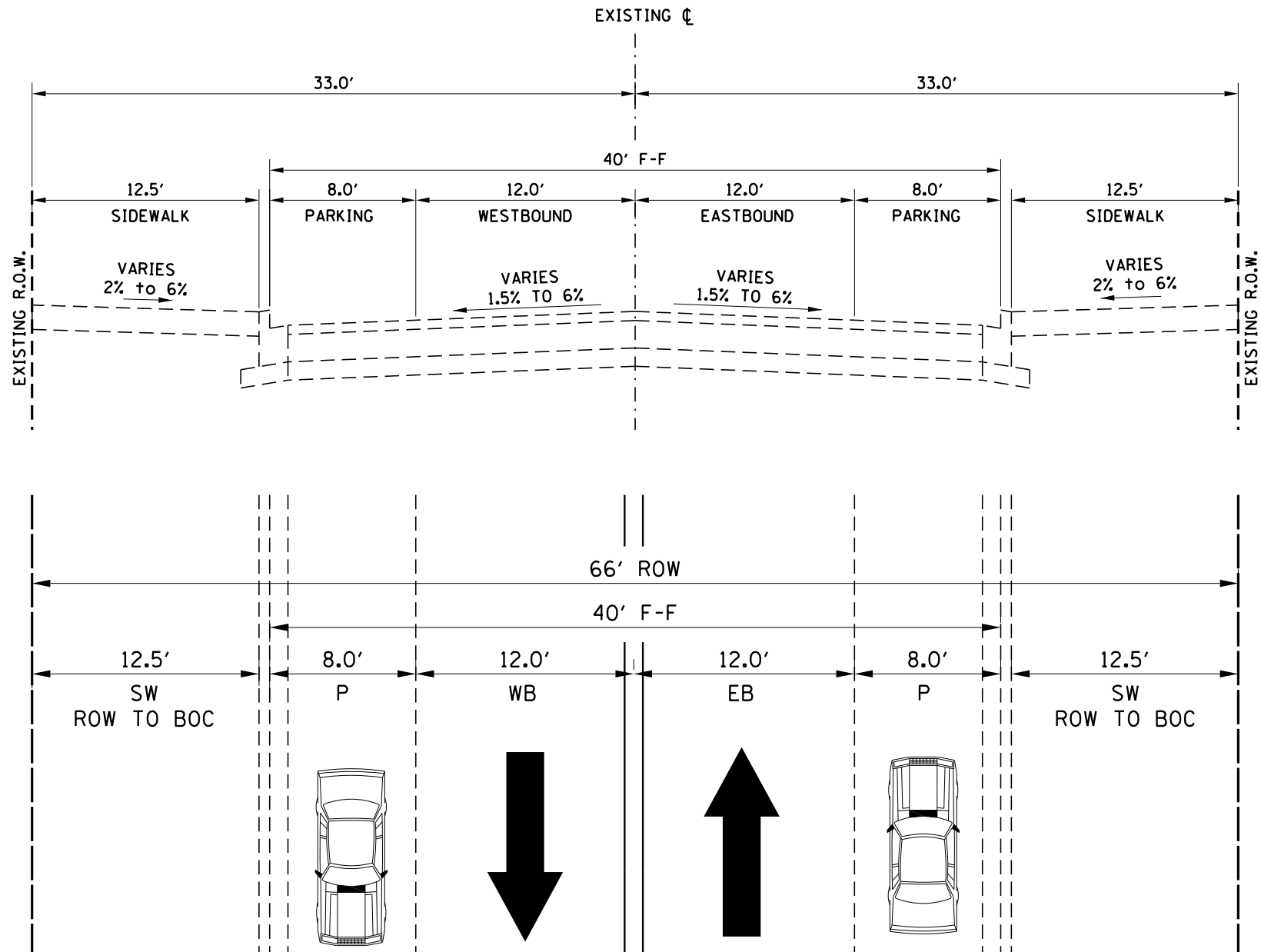
ARGYLE STREETSCAPE
Public Meeting

CDOT
CHICAGO DEPARTMENT
OF TRANSPORTATION

Burns & McDonnell
SINCE 1898

site design group, ltd.
urban design | landscape architecture | architecture

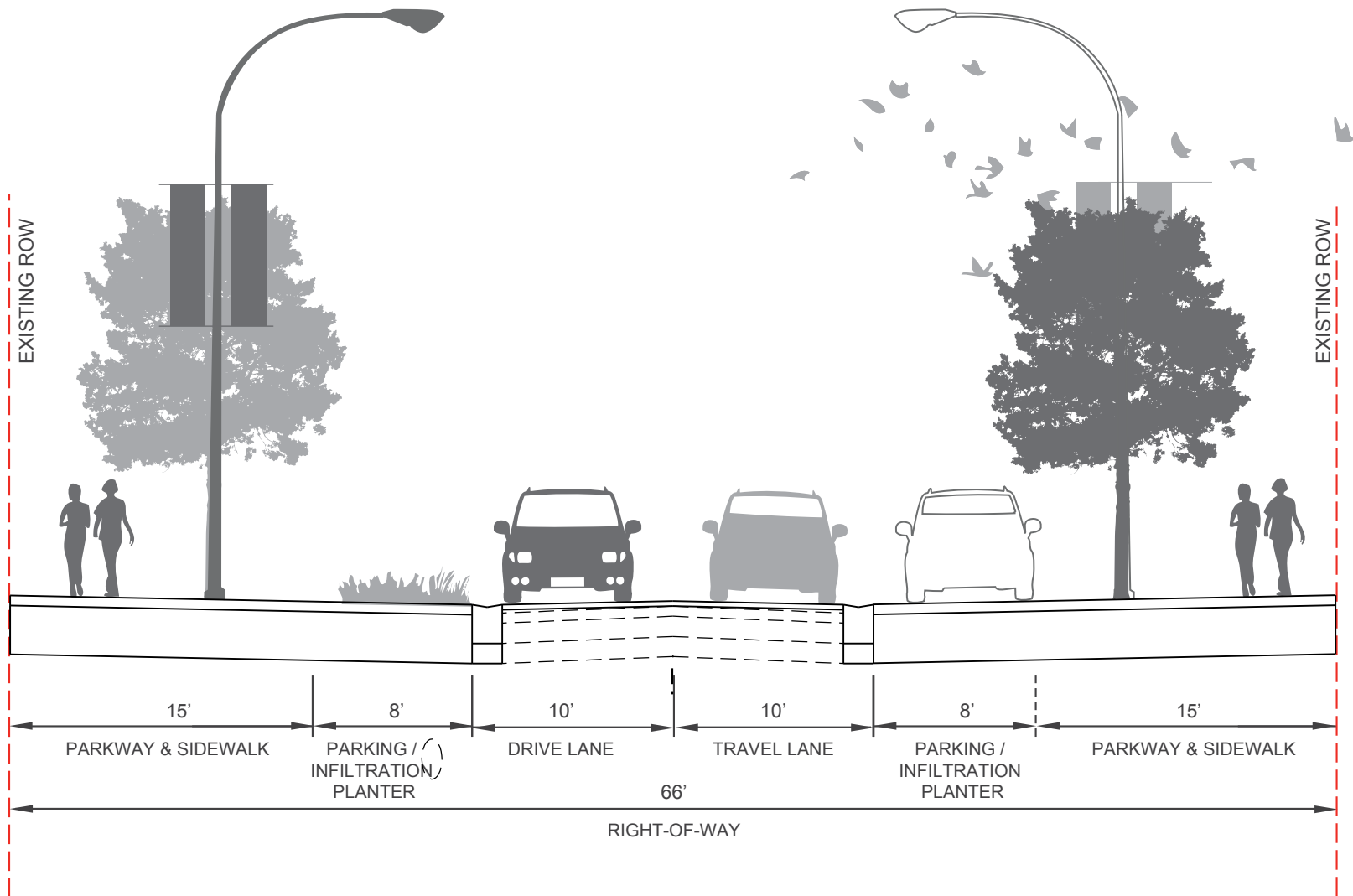
CATALYST
COMMUNICATIONS



EXISTING CROSS SECTION

July 29, 2013

ARGYLE STREETSCAPE
Public Meeting



PROPOSED CROSS SECTION

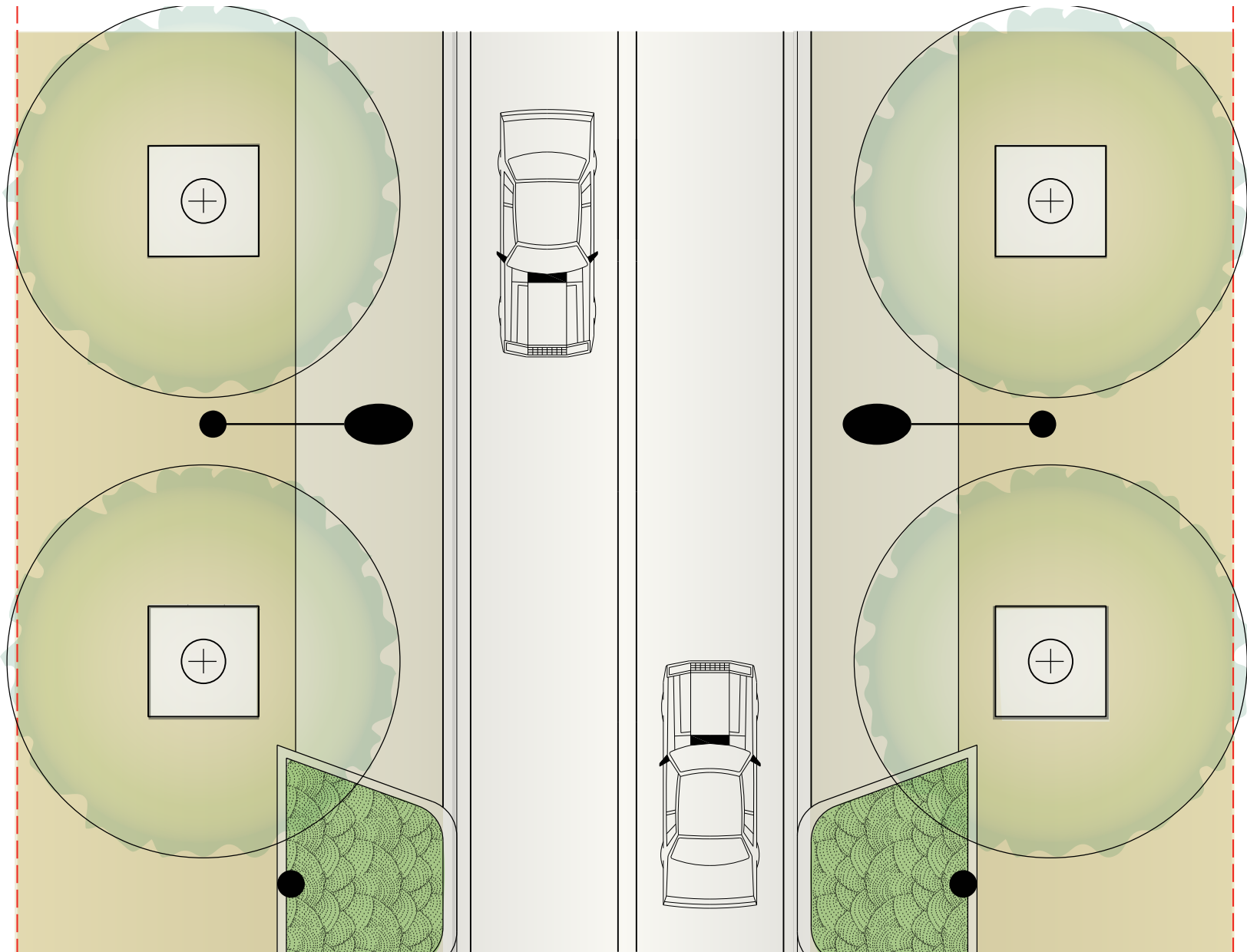
July 29, 2013

ARGYLE STREETSCAPE
Public Meeting



site design group, ltd.
urban design | landscape architecture | architecture





PROPOSED PLAN

July 29, 2013

ARGYLE STREETSCAPE
Public Meeting



site design group, ltd.
urban design | landscape architecture | architecture



Shared Street Cross Section

Broadway - Sheridan

Broadway / Argyle Enlargement

Winthrop Parking Lot Enlargement



Broadway - Winthrop:
9 of 13 parking spots maintained

Winthrop - Kenmore:
21 of 25 parking spots maintained

Kenmore - Sheridan:
16 of 20 parking spots maintained

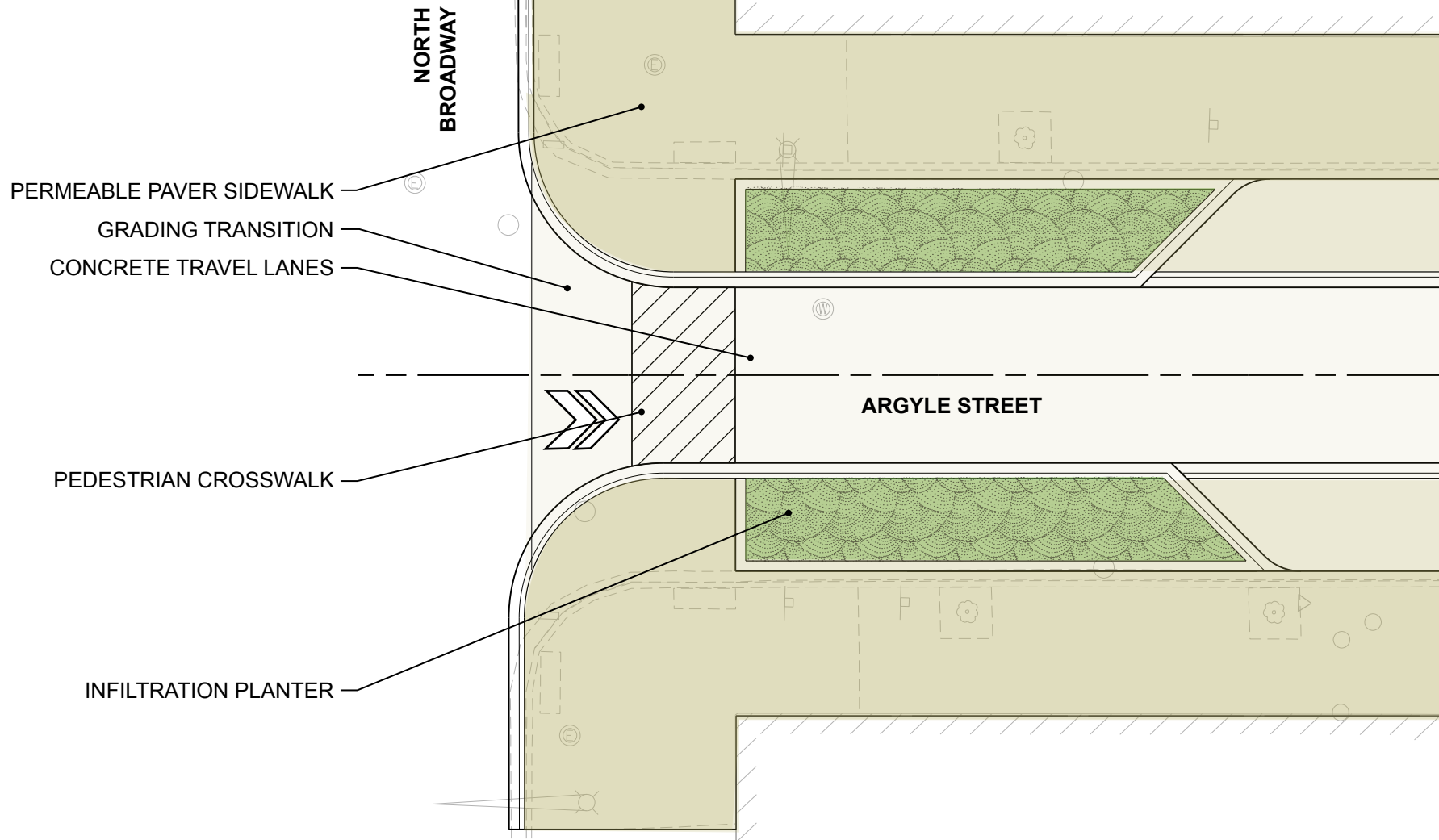
LEGEND

-  Shared Street Cross Section
-  Davit Light pole
-  Planted Infiltration Bump Outs
-  Tree in Grate
-  Continental Thermoplastic Crosswalk
-  Diagonal Parking Treatment
-  Removal of Stop Sign
-  New sidewalk, curb and gutter, driveways
-  Utility structure adjustment
-  Street Furniture

PROPOSED PLAN

July 29, 2013

ARGYLE STREETSCAPE
Public Meeting



BROADWAY / ARGYLE ENLARGEMENT PLAN

July 29, 2013

ARGYLE STREETSCAPE
Public Meeting



site design group, ltd.
urban design | landscape architecture | architecture

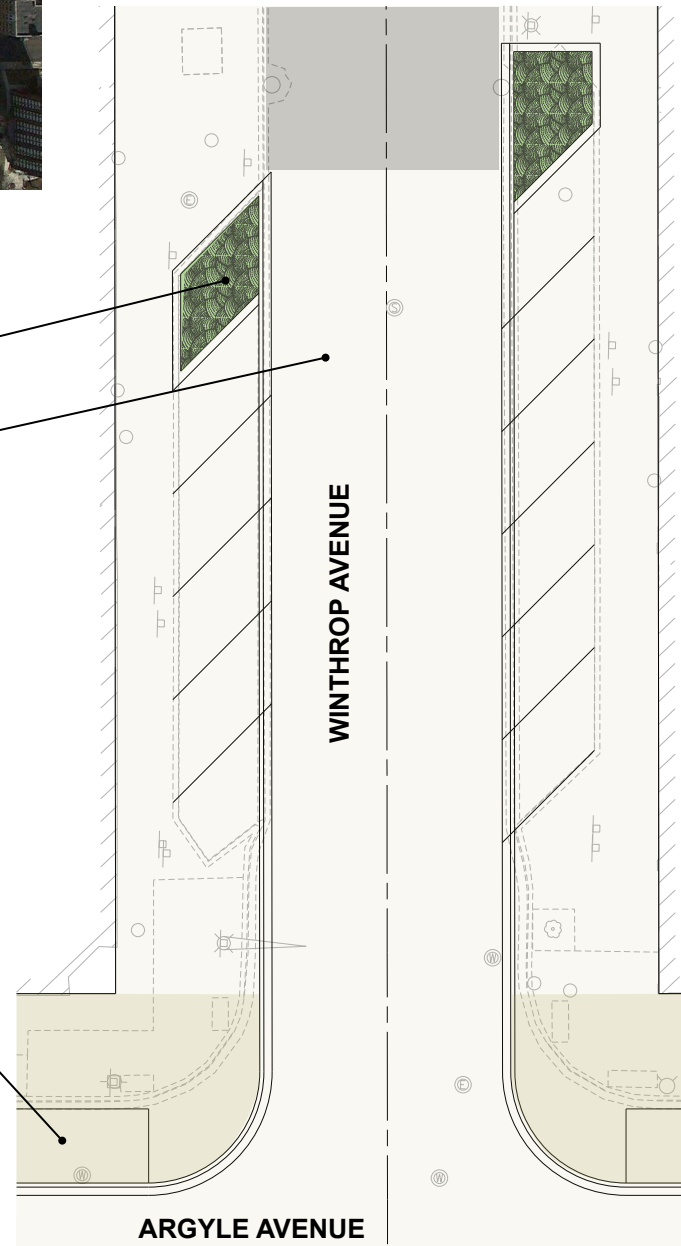




INFILTRATION PLANTER

CONCRETE TRAVEL LANES

PERMEABLE PAVER SIDEWALK
AND PARKING LANE



WINTHROP PARKING LOT ENLARGEMENT PLAN

pending funding availability

July 29, 2013

ARGYLE STREETSCAPE
Public Meeting



site design group, ltd.
urban design | landscape architecture | architecture

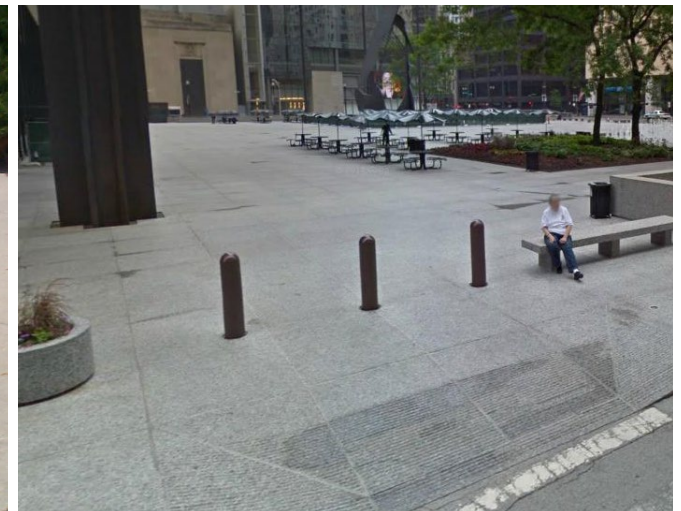




infiltration planters



street furniture - benches



retractable bollards (optional)



davit light poles



tree in grate



street furniture - bike racks



street furniture - trash receptacles

INCLUDED ELEMENTS

July 29, 2013

ARGYLE STREETSCAPE
Public Meeting



pavers in parkway/parking lane

pavers from R.O.W. - R.O.W.

permeable pavers

ADDITIONAL PAVER ELEMENTS

optional paver elements to be considered based on funding availability

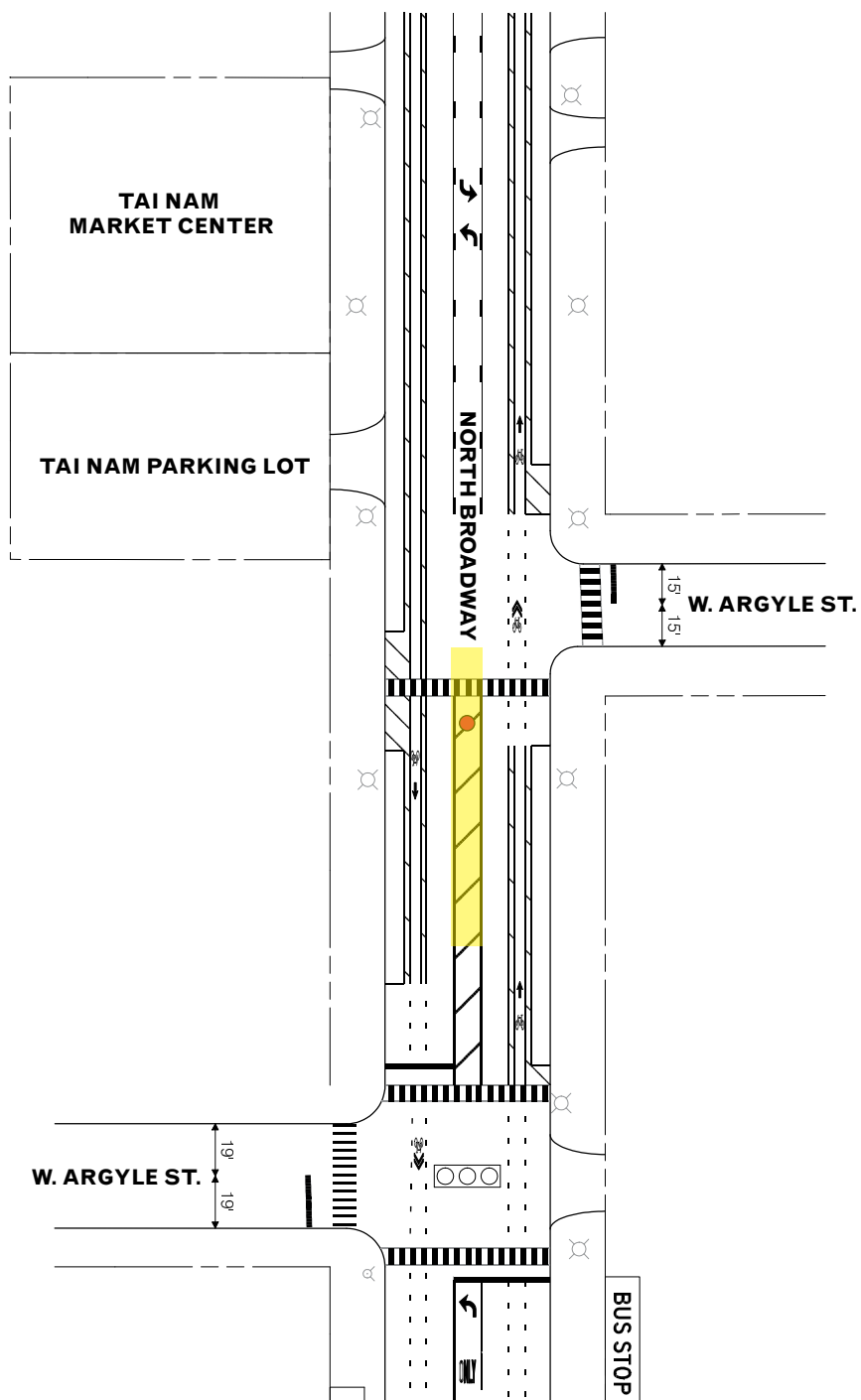
July 29, 2013

ARGYLE STREETSCAPE
Public Meeting



site design group, ltd.
urban design | landscape architecture | architecture





enhanced crosswalk



pedestrian refuge



vertical identifier



COORDINATION WITH BROADWAY STREETSCAPE

July 29, 2013

ARGYLE STREETSCAPE
Public Meeting



THANK YOU FOR YOUR TIME

Questions...Comments...

Further questions/thoughts on **Argyle** can be directed to
 Hannah Higgins
 CDOT Project Manager
 312-742-6401
Hannah.higgins@site-design.com

